

# Notes Practice

Download the app (free version) called *Music Tutor (sight reading)*



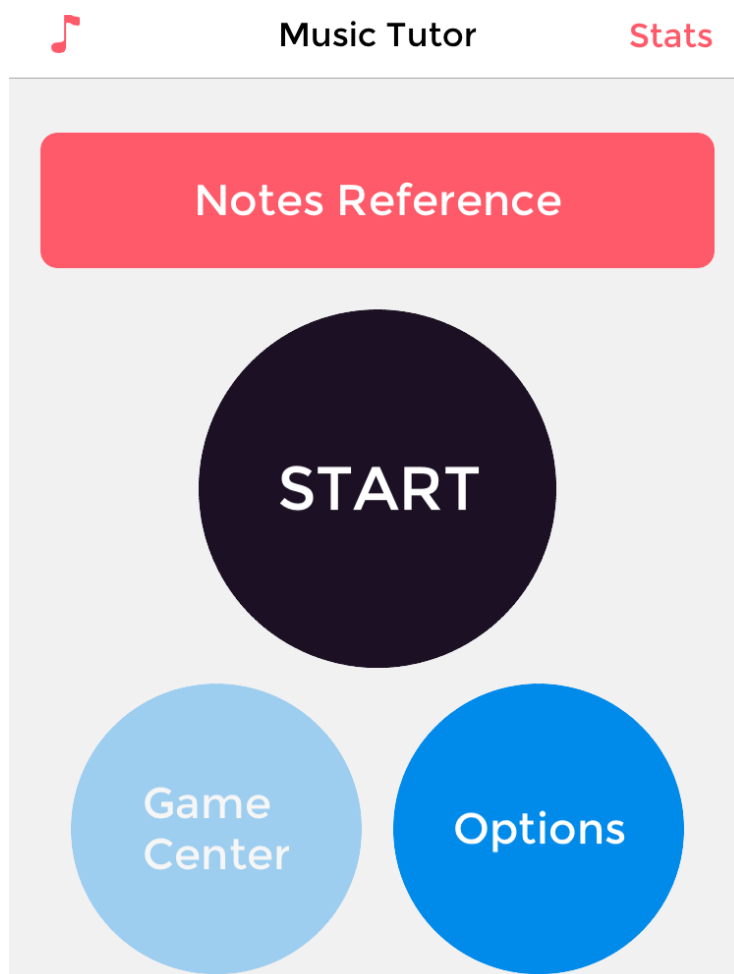
## Music Tutor (Sight-reading)

Improve your sight-reading

OPEN



Go to 'options'



Select 'treble'

Then move the slider to say 'C4 – G4'

Duration: 1 minute


Note names C, D, E, F, G, A, B

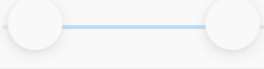
[< Menu](#)      **Options**

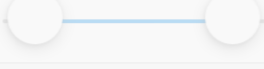
SHOW NOTES OF TYPE

**Treble** >

SET RANGE

**Treble**    **C4 - G4**    

**Bass**      **A1 - G4**      

**Alto**      **G2 - F5**      

Your score won't be counted for Game Center when range is set less than an octave.

DURATION

**1 min**    5 mins    10 mins    ∞

Your score won't be counted for stats when duration is set to ∞ (practice mode).

NOTE NAMES

**C, D, E, F, G, A, B** >

OTHER OPTIONS

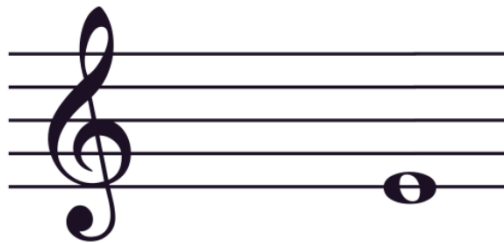
Students can now name the notes seen on the staff (lines).

See if they can beat their own score. What is the highest score they have achieved?

Virgin 11:11 68%

Menu

| Time  | Score | Accuracy |
|-------|-------|----------|
| 00:56 | 0     | -        |



Music Notes

Piano Keys

C#

E♭

F#

A♭

B♭

C

D

E

F

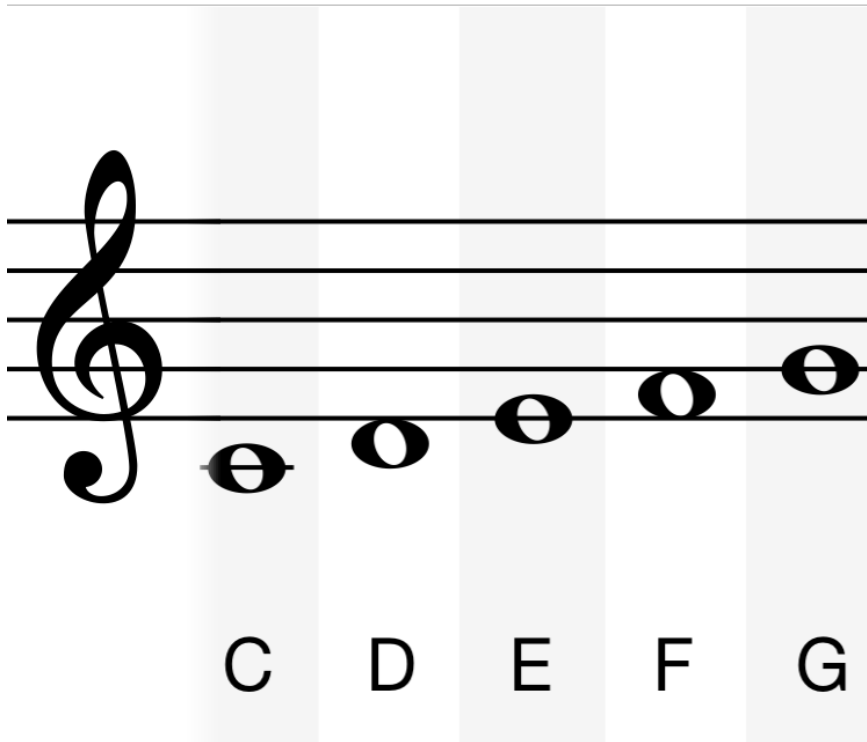
G

A

B

C4-G4 covers the notes below.

[< Learn](#) Treble Reference



A musical staff in treble clef showing five notes: C, D, E, F, and G. The notes are placed on the first line (C), first space (D), second line (E), second space (F), and third line (G). Vertical shaded bars are positioned behind each note, extending from the bottom of the staff to the top line. Below the staff, the letters C, D, E, F, and G are printed, each aligned with its corresponding note and shaded bar.