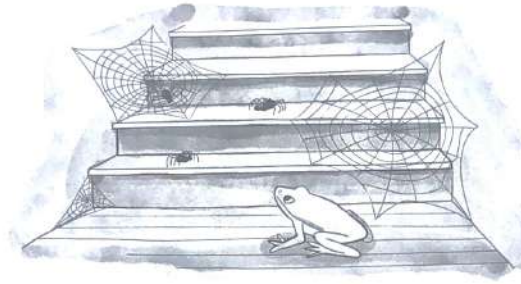


CREEPY BASEMENT

UNIT 3
READING



Andante

Knerr & Stevens

Walk - ing down the stair - way deep in - to the base - ment.

A musical staff in bass clef with a 4/4 time signature. The melody consists of quarter notes: G2, F2, E2, D2, C2, B1, A1, G1, F1, E1, D1, C1. A finger number '1' is written below the first note.

1

There's a frog that lives there and a nest of spi - ders.

A musical staff in bass clef with a 4/4 time signature. The melody consists of quarter notes: G2, F2, E2, D2, C2, B1, A1, G1, F1, E1, D1, C1. A finger number '1' is written below the first note.

1

8^{vb}-----

[8^{vb} Play one octave lower than written]